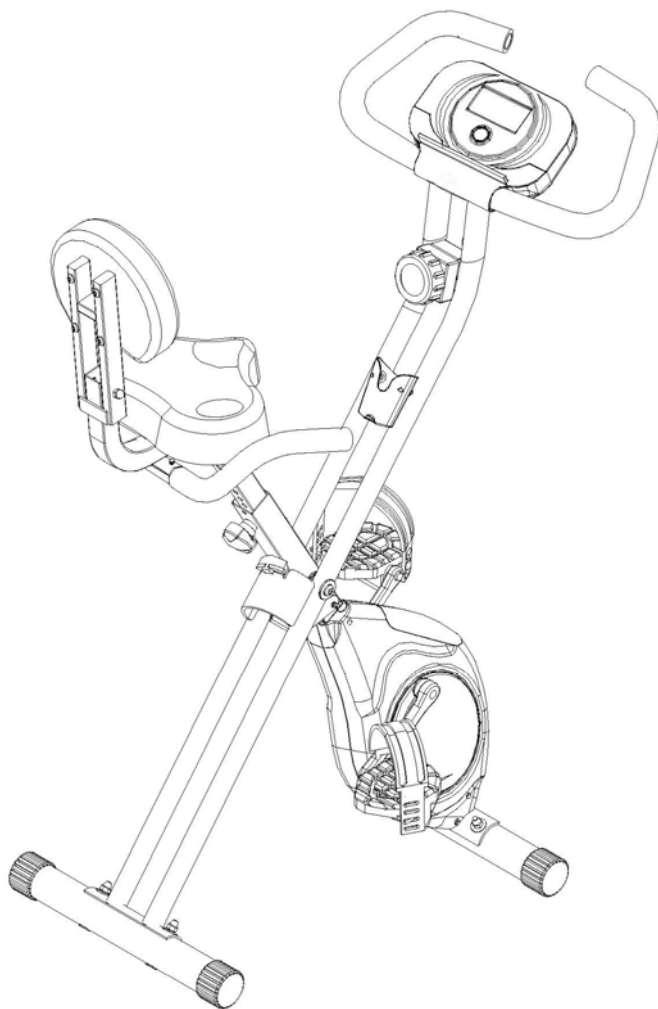


OTO

XB-1000 X-BIKE



Инструкция пользователя

1.

9.

2.

10.

3.

11.

4.

12.

EN9567 HC,

5.

110

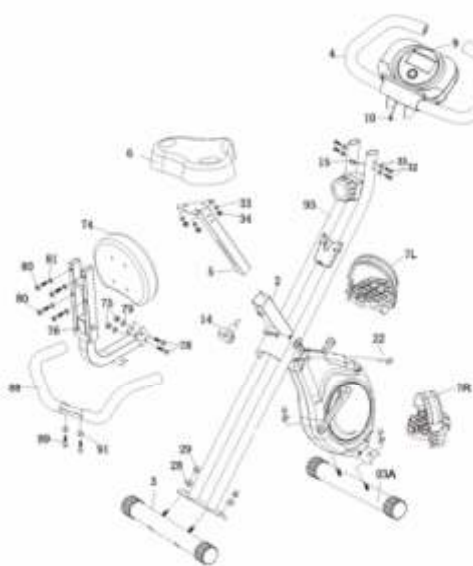
6.

35

7.

8.

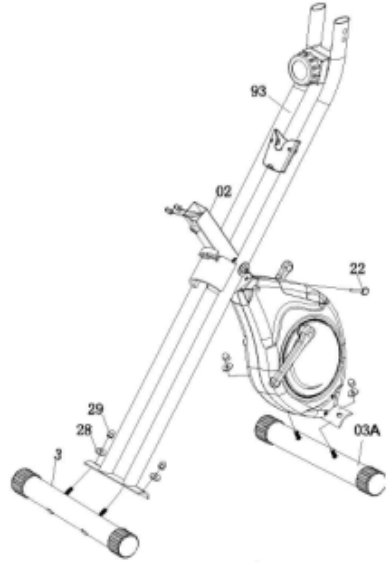
/



2		1	.
3		1	.
3A		1	.
4		1	.
5		1	.
6		1	.
7	/	2	.
14	16	1	.
15		1	.
22		1	.
28	ID8.2	4	.
29	8	4	.
32	M6 x 12	4	.
33	ID8.2	3	.
34	8	3	.
35	ID6.2	4	.
74		1	.
75	8	2	.
76		1	.
78	8*50	2	.
79	ID8.2	2	.
80	8*45	4	.
81		4	.
88		1	.
89	8*40	1	.
91	ID8.2*OD22.2	2	.
93		1	.

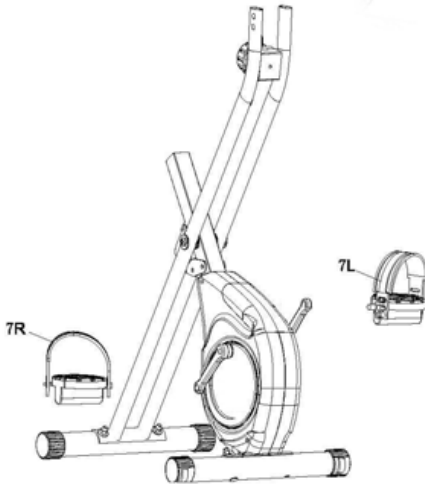
1

()
(22)
; (22)
X-Bike,
()
(03A) (02), 2
(29). (28) 2
(03) 2 (28)
(93), 2 (29).



2

(7L) (7R)
"L" "R".

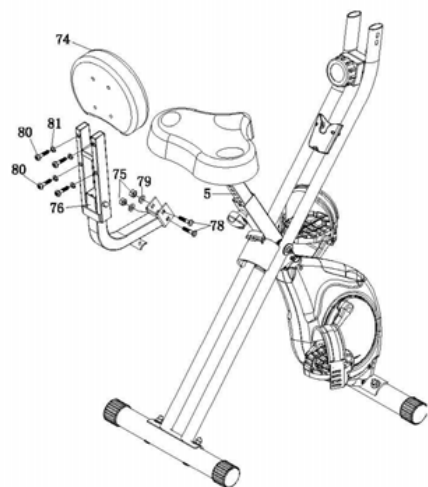
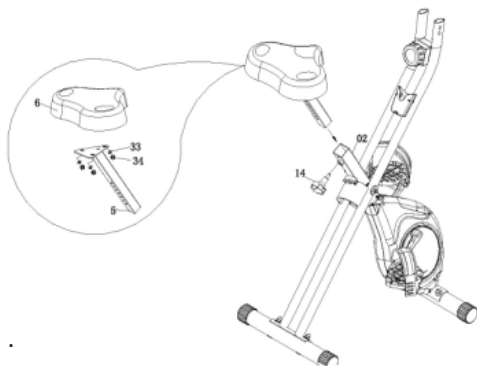


3

() (6)
(5),
(33)
(34).

() (6)
(2).

(14),



4

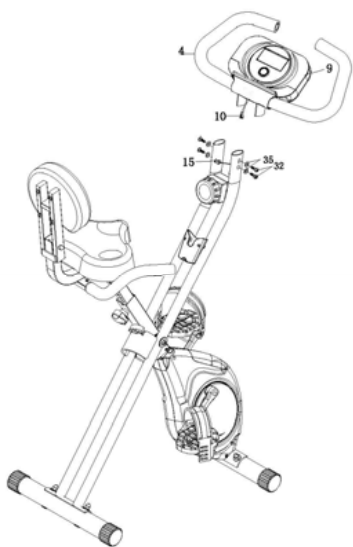
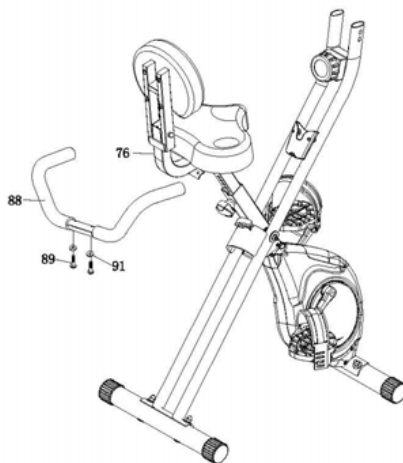
() (74)
(76) (80)
(81).

() (5)
(76) (78),
(79) (75).

5

(89)
(91).

(88)
(76)



6

()

(93),

(4)

(32)
(35).

()

(93),

(15)

(10).

X-BIKE.

:



:

1. SCAN () 2. SPEED () 3. DIST ()
4. TIME () 5. ODO () 6. CAL ()

:

MODE (): Mode,

AUTO () / :

4

SCAN ():
MODE,

SCAN.

30

6

SPEED ():
MODE,

SPEED.

DISTANCE ():
 MODE, DIST.

TIME ():
 MODE, TIME.

ODOMETER ():
 MODE, ODO.

CALORIE ():
 MODE, CAL.

		6
		: / / ()
		0.1 - 999.9 ()
		0:00 - 99:59 (:)
		0.1 - 999.9 ()
		0.1 - 999.9
		2
		0 ° +40 °